

A close-up photograph of a person wearing a black leather jacket. A pink circular button is pinned to the jacket, featuring the text "PUT YOUR MONEY WHERE YOUR HEART IS" and the hashtag "#PlymSocEnt". The person is holding a white mug filled with a light brown beverage, likely coffee. The background is slightly blurred, showing a red garment and a hand holding the mug.

Plymouth: A Social Enterprise City Book of social enterprise wonder *August 2020*

A vision for social enterprise in Plymouth

We recognise that the current emergencies we are facing such as the climate crisis, inequality, poor mental health, racism and enduring poverty are symptoms of the way that we organise our world and, particularly, our economy. The recent Coronavirus/Covid-19 crisis has shown us that we need to rethink our economy to ensure we tackle all these issues more effectively. This includes rethinking the role that businesses play in our economy and society.

The social economy is leading the way in showing how businesses can create value for communities, individuals and in the protection of our natural world.

Plymouth Social Enterprise Network believes that social enterprise is a fundamental way to help Plymouth become a better city to live and work in. This means a city where:

- Businesses are good for people and planet
- People with good ideas are supported to put them into practice
- Business ownership and wealth and power is widely shared
- Social enterprise is central to the way we do business
- There are a variety of social enterprise models such as co-ops, community businesses and Community Interest Companies
- Social enterprise is understood and people think of it as the model of choice when setting up a business
- Social enterprises have access to the very best business advice and investment.

About Plymouth Social Enterprise Network

Plymouth Social Enterprise Network (PSEN) was set up in 2011 and became a Community Interest Company in 2014. It is owned by its constituent social enterprise members and is managed by an executive committee which is elected at an Annual General Meeting. PSEN is set up to:

- Run a network which supports the development of social enterprise activity
- Raise awareness of social enterprise as a way of doing business.

You can find out more about the network at: www.plymsocent.org.uk



Email: hello@plymsocent.org.uk

Web: www.plymsocent.org.uk

Twitter: @plymsocent

Facebook: www.facebook.com/PlymouthSocialEnterpriseNetwork

Plymouth Social Enterprise Network is a registered Community Interest Company (number: 09130295)

What is social enterprise and why is it important?

Social enterprises are businesses that are changing the world for the better. Like traditional businesses they aim to make a profit but it's what they do with their profits that sets them apart – reinvesting or donating them to create positive social change.

Social enterprises can be co-operatives, community businesses, trading charities, community interest companies and other forms.

Social enterprises are in our communities and on our high streets – from coffee shops and cinemas, to pubs and leisure centres, banks and bus companies. Famous examples include Big Issue, Divine Chocolate and the Eden Project.

Social enterprises exist in nearly every sector from consumer goods to healthcare, community energy to creative agencies, restaurants to facilities management. There are over 100,000 social enterprises throughout the country contributing £60 billion to the economy and employing two million people.

Social enterprises are creating jobs and opportunities for those most marginalised from the workforce, transforming the communities they work in and making the United Nations Sustainable Development Goals a reality. It's business for good and when they profit, society profits.

*The sector is a major contributor to
Plymouth's economic wellbeing*



2 out of 5

*of the largest employers in the city are
social enterprises*

*200 social enterprises and community businesses
in Plymouth:*

- Employing around 9,100 people
- Bringing in up to £580 million income each year

About social enterprise in Plymouth

There are an estimated **200** social enterprises in the city

Collectively these businesses bring in nearly **£600 million** of income each year to Plymouth

There are around **9,100** people employed in social enterprises in Plymouth

Half of social enterprises in the city earn under **£100,000** per year

One in three social enterprises in Plymouth turnover less than **£50,000** per year

56% of our social enterprise leaders are women

61% of social enterprises in the city pay the Real Living Wage compared to 33% of FTSE100 companies

Social enterprises in the city operate in:

- Arts, culture and creative industries
- Business services
- Education, training and employment
- Entertainment and hospitality
- Environment, recycling and energy
- Financial services
- Food and drink
- Health and social care
- Heritage
- Housing
- Media
- Sports
- ...and more...

Here are just some of the brilliant social enterprises in Plymouth...

School for Social Entrepreneurs Dartington: developing the ecosystem for social enterprise

SSE Dartington helps develop the skills, strengths and networks social entrepreneurs need to tackle society's biggest problems. SSE Dartington have been running programmes to help individuals and businesses to increase their skills, knowledge, strengths and networks for a decade.

Based in Dartington Hall Trust, and founded in 1997 by Lord Dartington, Michael Young, this is an ambitious experiment for regeneration based in Devon. SSE hopes to build a more caring, creative, equal world where people live a fuller life.

www.the-sse.org/schools/dartington

@SSEDartington

facebook.com/SSEDartington

YOUR IDEA STARTS HERE

If you've got an idea for a project to improve your local community, we can make it happen. Since 1997, the School for Social Entrepreneurs has helped more than 1,000 ideas come to life: from a community bike café in Bristol, to a riding school in Brixton and an alcohol-free bar in Liverpool. We're offering you a fully funded year of training and development to help grow your idea and a grant to make it happen. Let's get started on your idea...

LLOYDS BANK

IF YOU HAVE AN IDEA THAT CAN
MAKE A DIFFERENCE IN YOUR COMMUNITY,
WE WANT TO HEAR FROM YOU. LLOYDS BANK
HAS A PLACE ON ONE OF THE SCHOOL FOR
SOCIAL ENTREPRENEURS' INNOVATIVE LLOYDS
BANK PROGRAMMES AND A GRANT TO
HELP DEVELOP AND GROW YOUR PROJECT.

NO

ABOUT THE PROGRAMME

The programme is delivered by the School for Social Entrepreneurs – we've been supporting it since 1997. The programme has been generously funded by Lloyds Bank, with additional funding from the Dartington Foundation and a number of local organisations.

1,000

STUDENTS HAVE
THROUGH THE SCHOOL

800,

Moments Café: reimagining the high street

Moments Café is based in the heart of Plymouth City Centre. It offers a safe environment for people to meet, eat and socialise. It is also a city centre hub providing information about dementia. The café also has a selection of conference and meeting rooms available on the first floor of the building. All profits go to Memory Matters; supporting people and families living with dementia in the community.

The interior of the cafe was designed to ignite conversation by recreating different eras in different zones of the cafe, including the 1950's, 60's, 70's and 80's. Moments pride themselves on good food, homemade on the premises; making dishes that are familiar, hearty and delicious! All food is sourced locally in Devon and Cornwall and they include both vegan and vegetarian options on the menu.



Plymouth Energy Community: climate, energy and ownership

Plymouth Energy Community (PEC) is creating a fair, affordable, zero carbon energy system with local people at its heart. PEC is a charity and a social enterprise with a cooperative ethos, made up of members who want a better future for our community and planet. With a mission to increase local ownership and influence over local energy solutions and tackling fuel poverty and the climate crisis, PEC has raised multi-million pounds of investment to develop solar installations on schools, Plymouth's leisure centre and in developments on land in the city.

PEC's family of organisations purposely uses a cooperative, member-led structure to allow community representatives to take leadership on local solutions to the climate emergency and the energy transition.



Livewell Southwest: new healthcare models

Livewell Southwest is a social enterprise provider of integrated all-age NHS and social care services operating across South Hams, West Devon and Plymouth. Being a social enterprise and integrating health and social care means that they can deliver care for people in new ways which are more efficient and locally responsive.

Livewell's services are diverse: community nursing; physiotherapy; community mental health services; social work; health improvement services; services for children and young people as well as a wide array of general and specialist inpatient services.

Livewell Southwest is one of the largest community health and social care enterprise in the UK. Working closely with the Devon Sustainability and Transformation Partnership, Livewell employs nearly 3,000 people who live and work in the local area with a commitment to providing outstanding care. As a social enterprise, Livewell commit's to re-investing any surplus back into services – allowing them to continually deliver better care to the communities they serve.





Diversity Business Incubator: supporting Black, Asian and Minority Ethnic entrepreneurs

Diversity Business Incubator (DBI) aims to harness and ignite the entrepreneurial momentum in the deprived communities with focus on the Black, Asian and Minorities Ethnicity as well as the Refugees and Migrant In the south west of UK. DBI brings together a comprehensive and sustainable business support to the Black, Asian and Minority Ethnicity living in the region.

DBI delivers a range of mentoring, coaching, business advice and capacity building work to boost the skills of entrepreneurs. DBI is particularly celebrated for its award ceremonies that raise the profile of Black, Asian and Minority Ethnic entrepreneurs.



Flameworks: creative arts and social enterprise

Flameworks is a creative arts facility based in Devonport, Plymouth, providing affordable artists' studios and supporting a network of over 60 artists and makers. It hosts a community of professional artists ranging from painters and illustrators to blacksmiths and sculptors and provides communal facilities and equipment that allow artists and recent graduates to continue their professional practice. Associate members can benefit from being able to hire specialist equipment such as forges, pottery wheels, kilns and lampworking torches.

Flameworks is a Community Interest Company and is managed by a board of directors and volunteers. It was established in 2000 by former staff and students of Plymouth College of Art to address graduate retention issues in the area and provide workspace for

Nudge Community Builders: community ownership and renewal

Nudge is a community benefit society founded by local people to bring empty buildings on Union Street back into use. Their vision is to make the street a place the whole world loves!

The organisation is owned by local people and community share investors. They run three buildings along the street including The Clipper, this had been a 24-hour pub before standing empty for several years. Nudge bought and renovated the pub creating two homes to meet local need and a mini market area on the ground floor for local social entrepreneurs. They spend 70% of their income within 1 mile and 95% in Plymouth, and have a busy creative programme of activity along the street in collaboration with local artists.

Nudge sparks lasting change in surprising and enterprising ways that make an impact in three ways. They nudge neglected buildings and spaces to feel safe and loved. They nudge local people to be brave, resilient, creative and healthy and they nudge local and national change to support other communities by using their stories and leading by example.





Pollenize: community business and the natural world

Pollenize is using the power of community beekeeping, citizen science, big data and environmental DNA techniques to help safeguard pollinators.

Insect pollinators include bees, wasps, ants, flies, butterflies and moths, flower beetles and more. These species provide vital services for wildlife, human health and contribute to the growth of fruit, vegetables and many nuts, as well as flowering plants.

Pollenize has produced Rewilding Citizen Science Seed Packets, informed by data analysis and filled with seeds that benefit most pollinator species. Citizen Scientists are encouraged to plant the seeds and upload their sowing location to contribute to the research that Pollenize is carrying out.

Pollenize is also providing local schools equipment, expertise and educational workshops and is helping to establish and manage school beehives.

www.pollenize.org.uk

There's more: A day in the life of a Social Enterprise City

Toast for breakfast
Column Bakehouse



Hire a bike
Bikespace



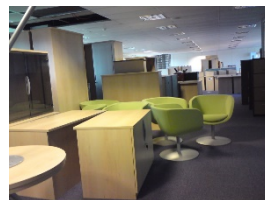
Ride to my office
Millfields Trust



Get some photos done
Fotonow



Buy a recycled desk
Surplus Rescue



Do some banking
Plymouth Credit Union



Borrow some tools to
fix house
Borrow Don't Buy

Which one would
you borrow?



Grab some lunch
No Whey!



Book a dentist
appointment
Peninsula Dental



Get some physio
Livewell SW



Pick up kids from
childcare
Seedlings Nursery



Head to the skate park
PRIME



Advice on starting a
business

Iridescent Ideas



Have a pint with
friends

Billy Ruffians Brewery



Head home

*Plymouth Community
Homes*



Join us

We are the leading authority on social enterprise in Plymouth. We are the only network of social enterprises in the city. We are a valued strategic partner to Plymouth City Council, higher and further education providers, the Local Enterprise Partnership and national organizations like SEUK, Power to Change and the Social Enterprise Mark. See more at www.plymsocent.org.uk.

Your membership will be to a network that includes the leading and most innovative social enterprises in Plymouth ranging through community businesses to coops to CICs, mutual, trading charities and more.

Together we are making a positive difference in Plymouth.

Together we are changing the face of business in the city.